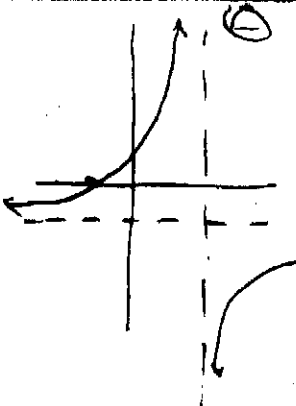
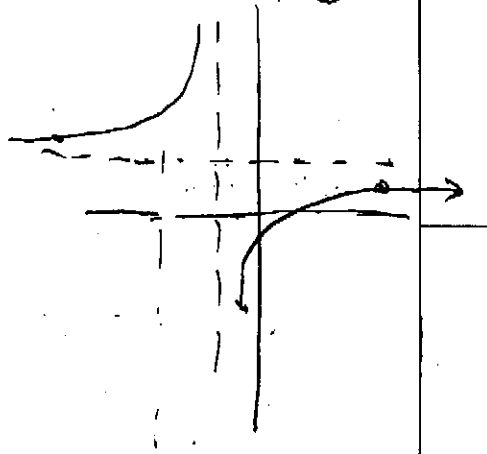


Asymptote Puzzle 1

1-11 odd



3



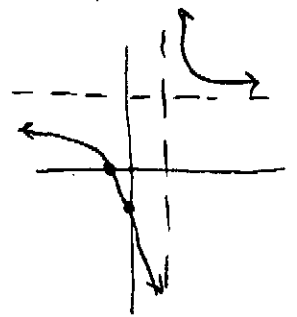
5 $y = \frac{4}{x} - 1$

7 $y = \frac{4}{x+4}$

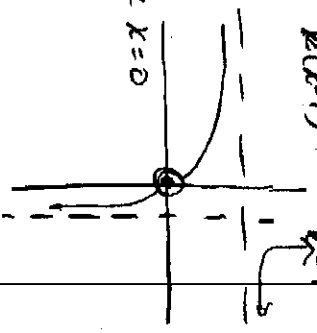
9 $\frac{x-1}{x+2}$

11 $y = \frac{2x^2}{x^2-x} = \frac{2x^2}{x(x-1)} = \frac{2x}{x-1}$

I $x: x=1$
 $y: y = \frac{1}{2}$
 A $x = -2$
 $y = 1$

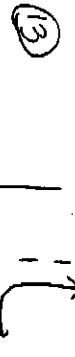


I $x: x=0$
 $y: y=0$
 A $x=1$ hole $x=0$
 $y=2$

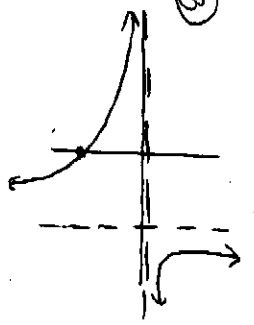


Practice 9-3 1-27, odd out #19

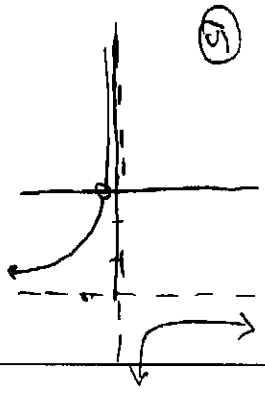
1 $x=4, x=-3$



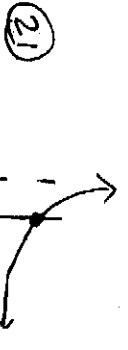
3 $x=2$



5 $x=-1$



7 $y=0$



23 VA $x=1$
 hole $k=0$

9 $y = \frac{1}{2}$

11 $y=0$

25 VA $x=-2$

27 VA $x=3$
 hole $k=-3$